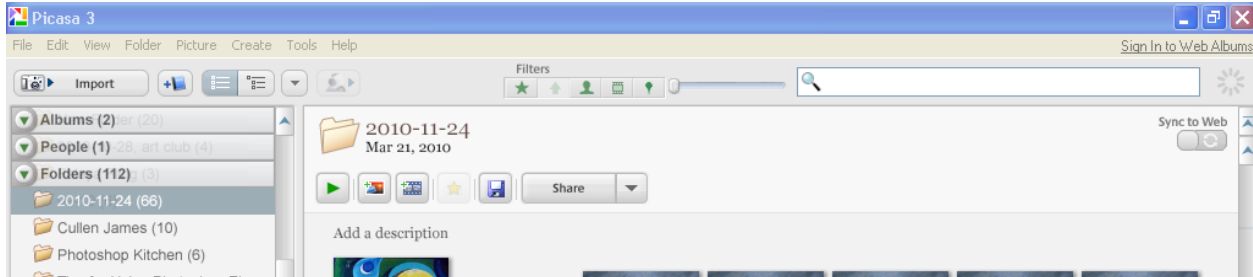


# USING PICASA3 TO MAKE A CONTACT SHEET

## Importing Pictures to Picasa:



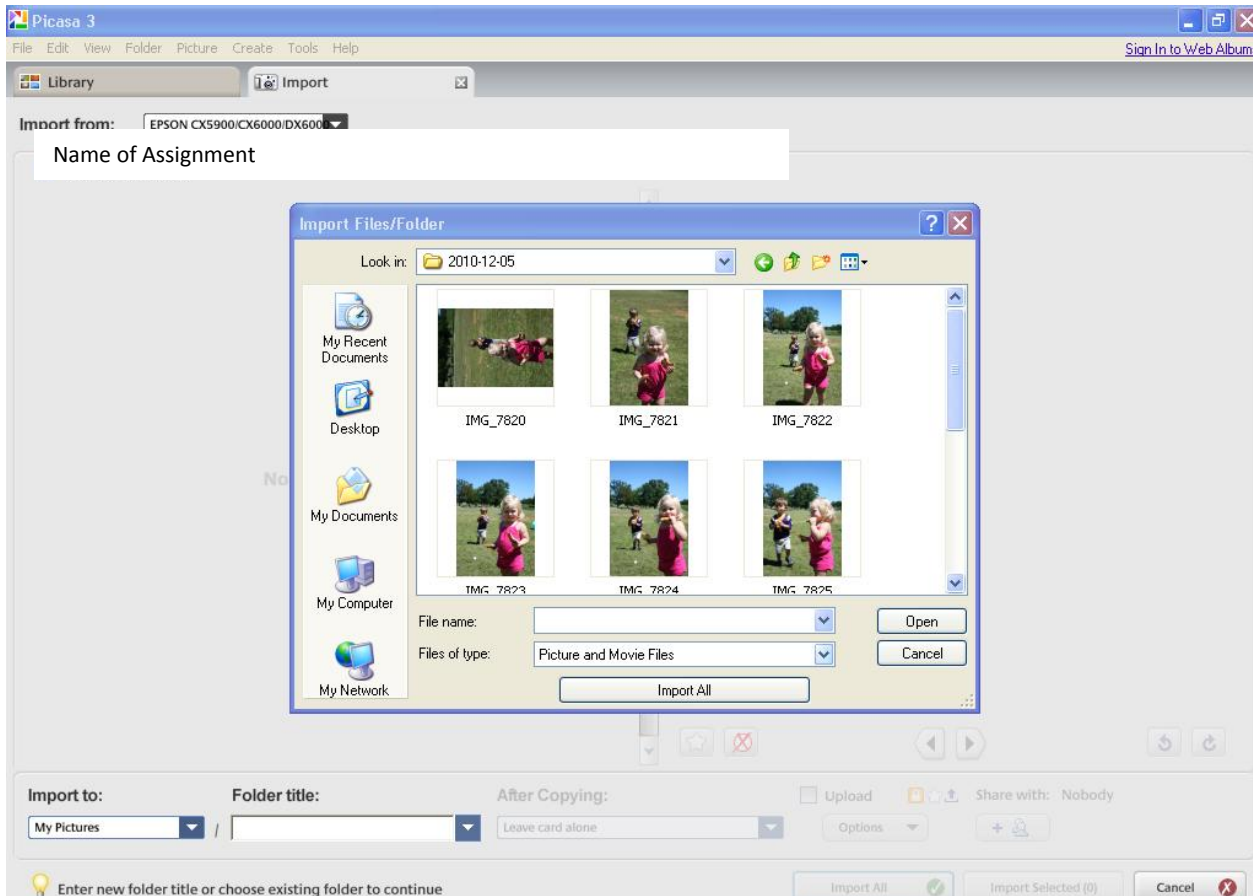
Import

Select Device: *Camera/Folder/USB/etc.*

Open File

Import All

Import All

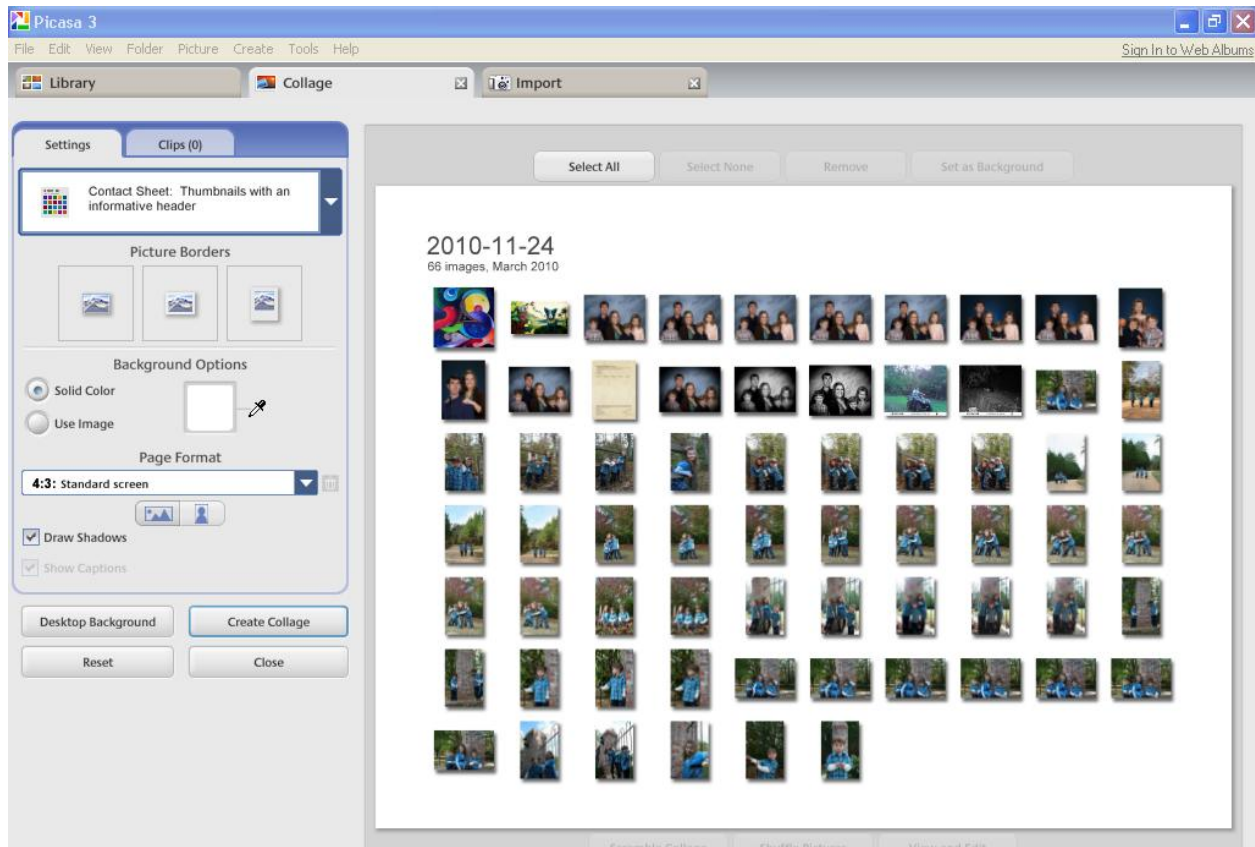


### Creating a Contact Sheet:

Select Folder *(Make sure folder is selected in the bottom left corner)*



Select Collage at bottom right



Select Contact Sheet from settings

Select Create Collage

Open folder and locate file (My Pictures> Picasa> Collage)

Right click on file

Rename: First initial last name contact 1, contact 2, etc.